

GATES CHILI CENTRAL SCHOOL WATER SAMPLE REPORT MAY 2016

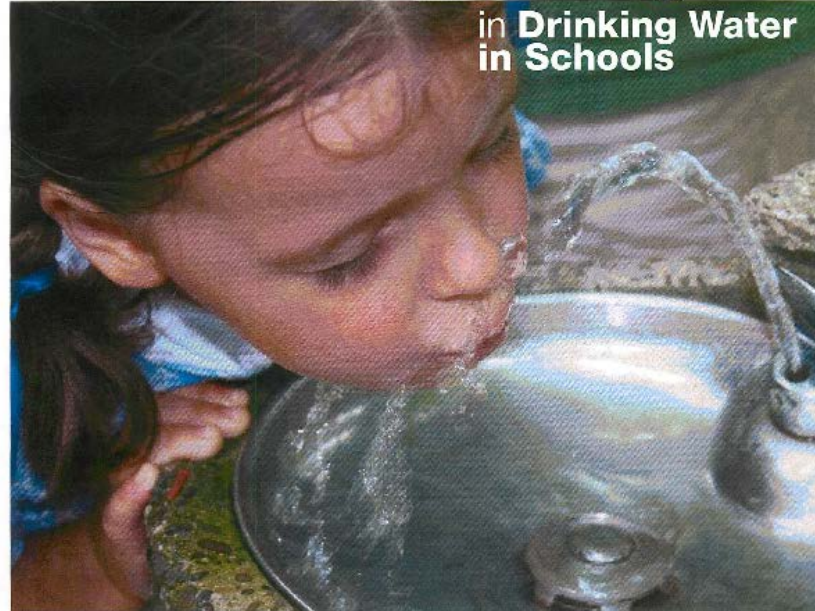


**EPAs 3Ts for
Reducing Lead in
Drinking Water in
Schools**

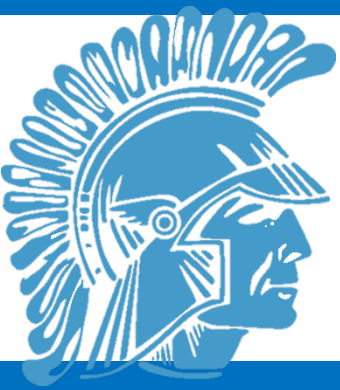
**Goal less than 15
Parts Per Billion
(PPB) in schools**

 **EPA** United States
Environmental Protection
Agency

**3Ts for Reducing Lead
in Drinking Water
in Schools**



Revised Technical Guidance

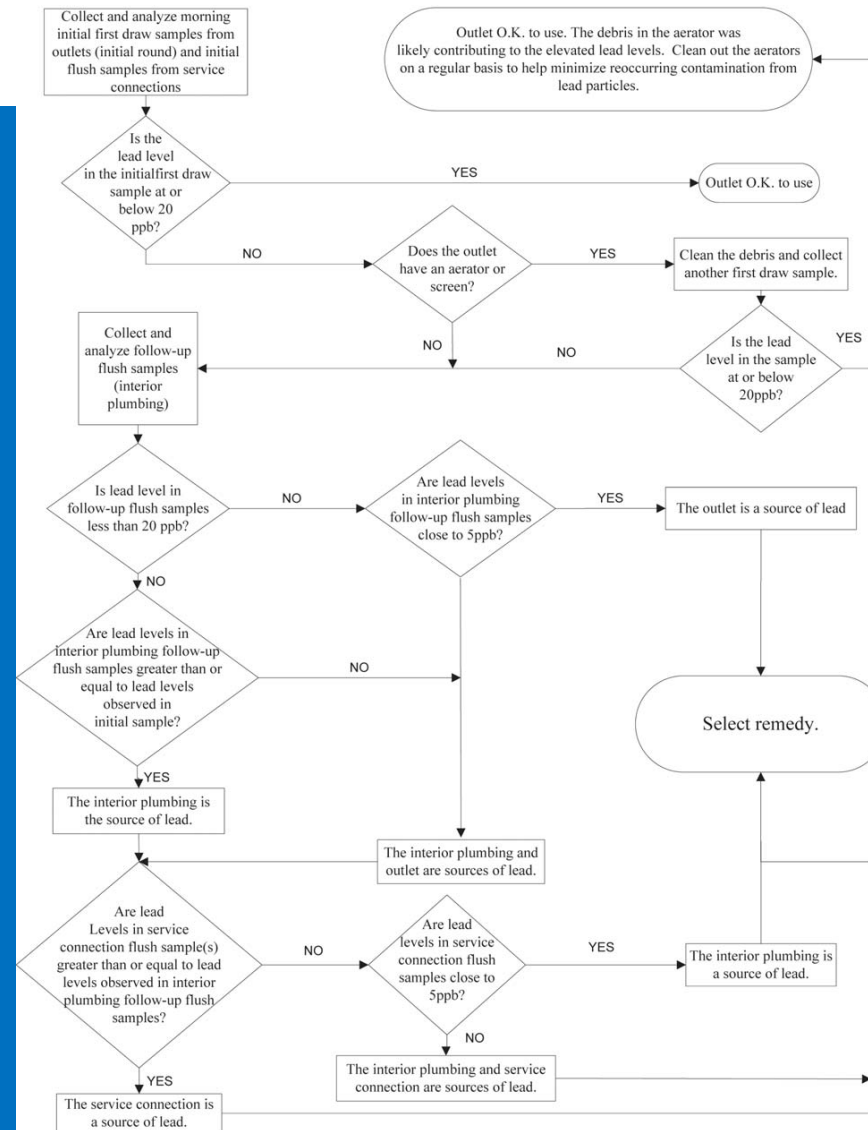


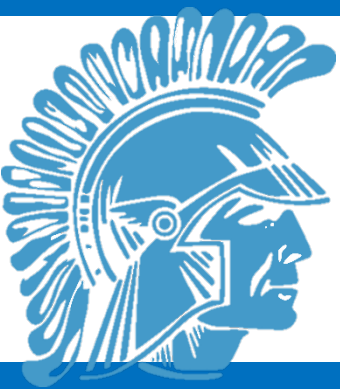
WATER SAMPLE REPORT MAY 2016



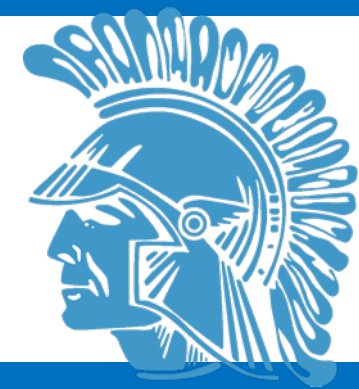
Strategy Flowchart

- Step 1 – Initial Samples
- Step 2 – Clean Aerators; take second sample
- Step 3 – Flush Sampling
- Step 4 – Select Remedy
 - Replacement
 - Eliminate
 - Label
- Step 5 – Follow up sample on replacement fixtures





WATER SAMPLE REPORT MAY 2016



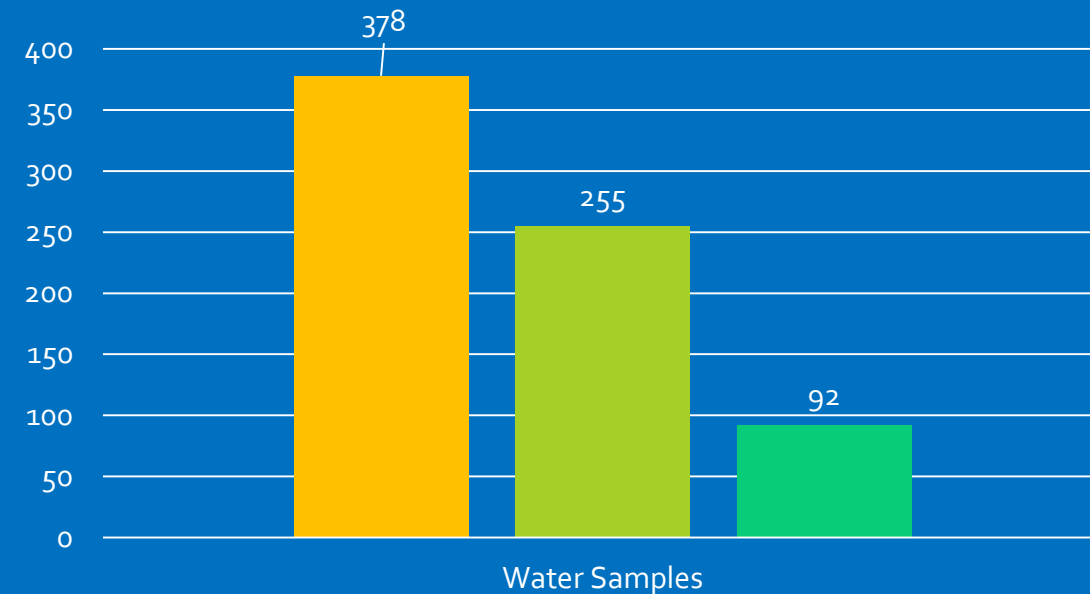
Total of 378 Samples Taken on 4/13 and 4/14/2016

Samples Delivered to Monroe County Water Authority on Monday 4/18/2016

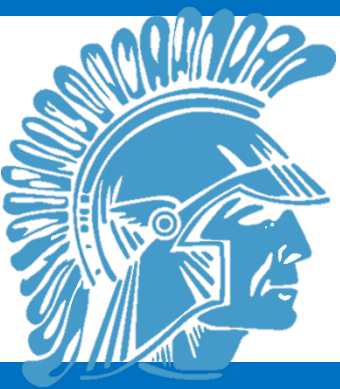
ALS Environmental tested our samples at \$20 per sample

Received Results back Friday 5/6/16

- 255 Samples - some trace of Lead
- 92 Samples -15 Parts Per Billion (PPB) or Higher
- 67% and 24%
- **Placed faucets and drinking fountains temporarily out of service 5/9/2016 before students arrived or labeled them for hand washing only.**



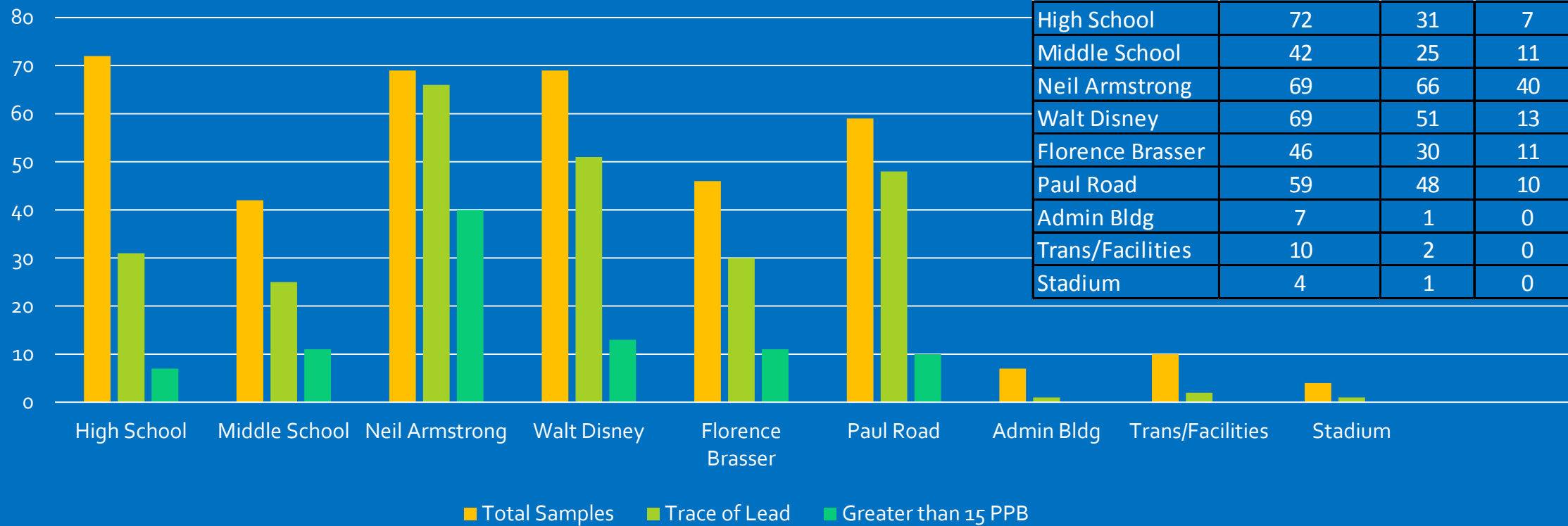
■ Total Samples ■ Trace of Lead ■ Greater than 15 PPB



WATER SAMPLE REPORT MAY 2016



Building by Building Initial Results



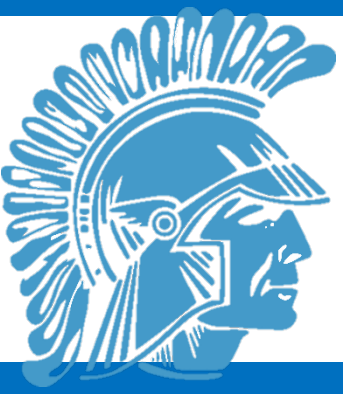


WATER SAMPLE REPORT MAY 2016



Findings so far:

- 3 Drinking Fountains tested 15 PPB or higher – 2 at Armstrong and 1 at Brassier
- 3 Kitchens impacted – Armstrong, Paul Road and Disney
- Majority of 15 PPB results are from faucets and drinking fountains that get very limited use

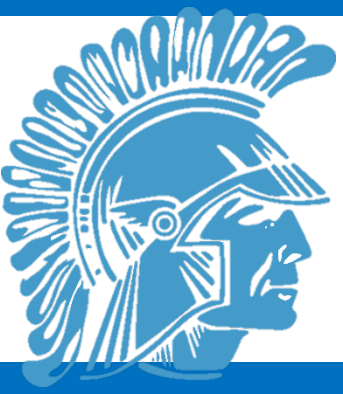


WATER SAMPLE REPORT MAY 2016



Next Steps

- Step 2 – Clean Aerators on all faucets that tested 15 PPB or Higher and take another sample to test
- Determine if drinking fountains are needed
- Determine if sinks and faucets are needed in kitchens
- Continue to communicate our results and findings



WATER SAMPLE REPORT MAY 2016



- Any Questions?