

# Gates Chili CSD

## Board of Education

Update 6/12/2018



# Gates Chili Central School District

## Proposed Capital Project Phasing & Schedule

### Phase 1.1 Athletic Field

SED Submission	1/2/2018 (BID)
Construction Start	7/16/2018*
Construction Completion	8/30/2019*

### Phase 1.2 Florence Brasser 2 UPK Classroom Addition

SED Submission	1/15/2018 (Submitted)
Construction Start	12/3/2018*
Construction Completion	11/18/2019*

### Phase 1.3 Middle School

SED Submission	6/25/2018
Construction Start	6/3/2019*
Construction Completion	7/26/2021*

### Phase 1.4 Paul Road and Florence Brasser Elementary

SED Submission	6/11/2018 (Submitted)
Construction Start	5/6/2019*
Construction Completion	8/24/2020*

### Phase 1.5 High School

SED Submission	8/6/2018
Construction Start	7/8/2019*
Construction Completion	3/1/2021*

### Phase 1.6 Walt Disney and Neil Armstrong Elementary

SED Submission	2/7/19
Construction Start	1/23/2020*
Construction Completion	9/15/2021*

### Phase 1.7 District Wide EPC

SED Submission	5/2/18
Construction Start	3/26/2019*
Construction Completion	10/7/2019*

\* Dates indicated are estimated pending NYSED approval process and bidding

# Middle School



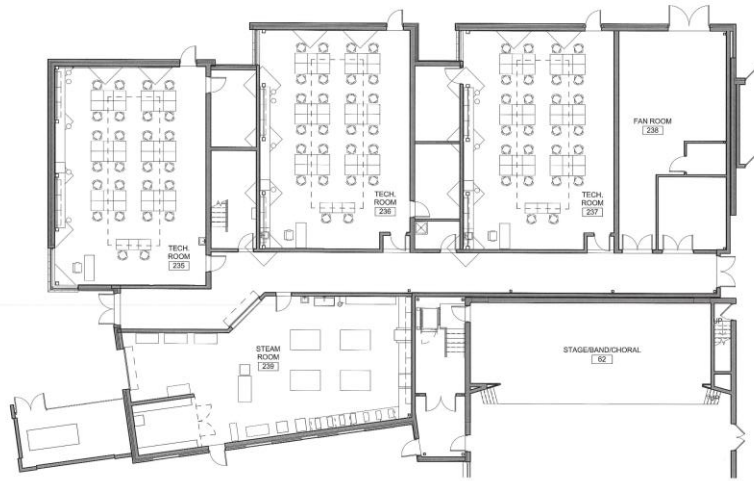




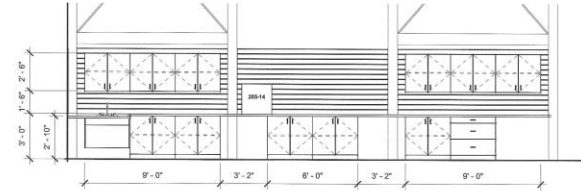
3/64" = 1'-0"

MS - OVERALL PROPOSED PLAN  
2017 CAPITAL IMPROVEMENT PROJECT

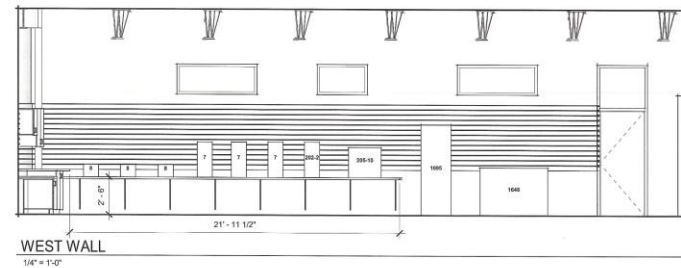
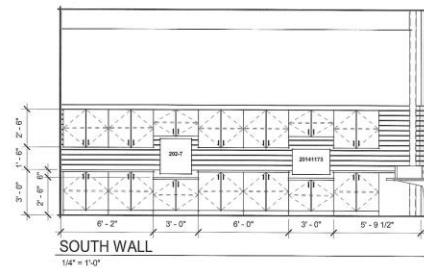
02/19/18



MS - TECH WING  
DESIGN DEVELOPMENT  
2017 CAPITAL IMPROVEMENT PROJECT  
05/11/18



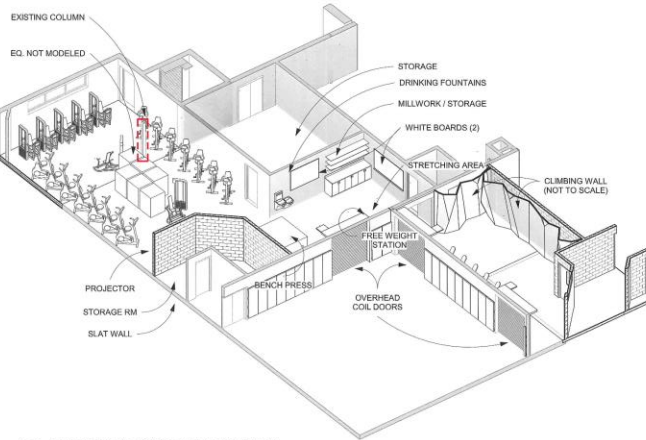
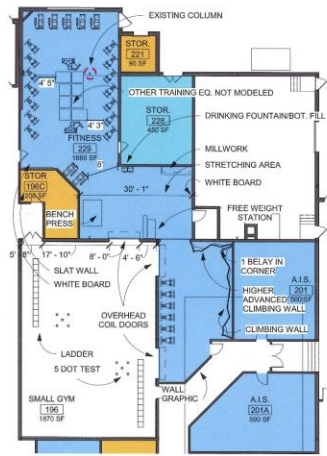
MS - TECH WING  
DESIGN DEVELOPMENT  
2017 CAPITAL IMPROVEMENT PROJECT  
05/11/18



MS - TECH WING  
DESIGN DEVELOPMENT  
2017 CAPITAL IMPROVEMENT PROJECT  
05/11/18







2 PROPOSED FIRST FLOOR PLAN  
1/16" = 1'-0"

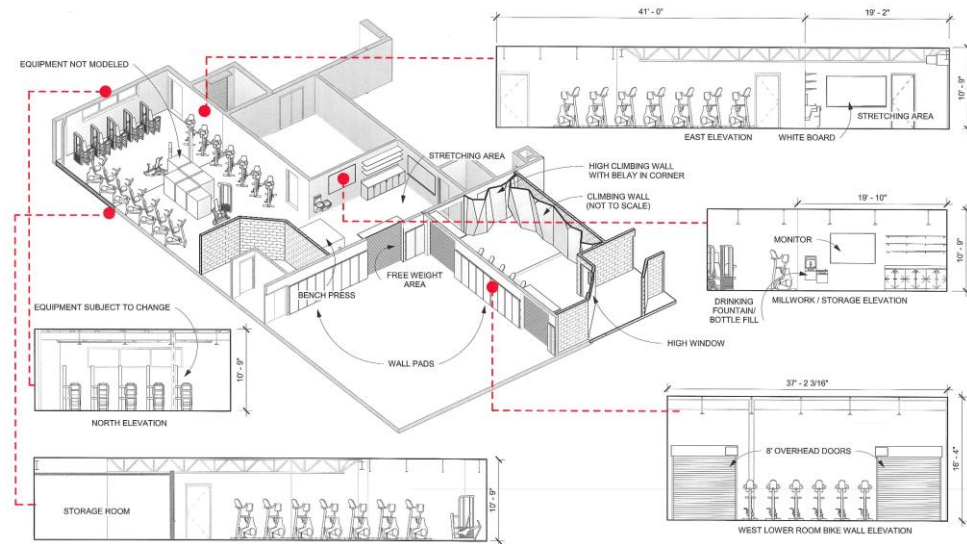
3 FITNESS PERSPECTIVE 3D VIEW



DD SIGN OFF:

### MS - FITNESS AREA PROPOSED PLAN & VISUAL

DESIGN DEVELOPMENT  
2017 CAPITAL IMPROVEMENT PROJECT  
02/08/18



### MS - FITNESS PROPOSED ELEVATIONS

DESIGN DEVELOPMENT  
2017 CAPITAL IMPROVEMENT PROJECT  
02/08/18



DD SIGN OFF:



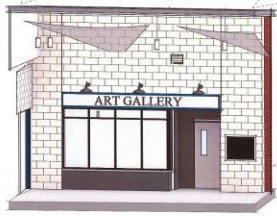




ART FROM TEACHING WALL

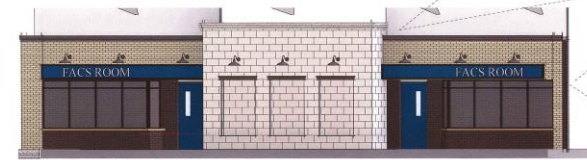
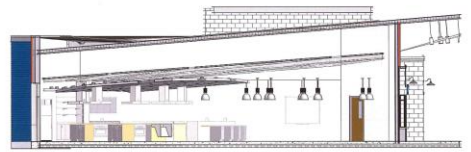


ART FROM COURTYARD



ART FROM COURTYARD

ART FINISHES  
ART ROOM, ART GALLERY, ART ROOM



FACS FINISHES  
FACS ROOM, ART GALLERY, ART ROOM





VIEW TO BOOKSTORE AREA

DESIGN DEVELOPMENT  
2017 CAPITAL IMPROVEMENT PROJECT  
03/15/18



PERSPECTIVE OF LIBRARY ENTRANCE

DESIGN DEVELOPMENT  
2017 CAPITAL IMPROVEMENT PROJECT  
03/15/18

MS - CENTER CORE AREA  
2017 CAPITAL IMPROVEMENT PROJECT

02/15/18



ELEVATION A



ELEVATION B





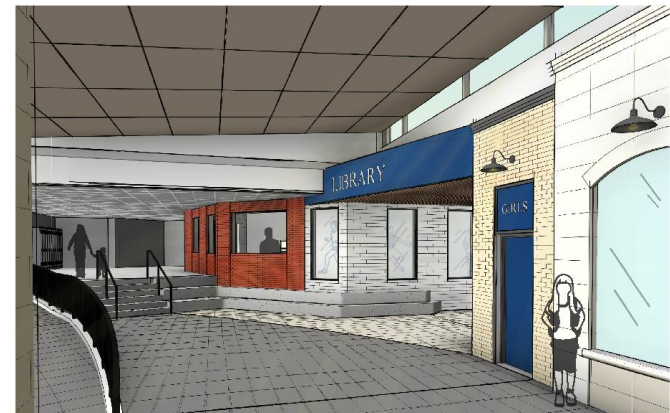
PERSPECTIVE FROM STAIR  
 DESIGN DEVELOPMENT  
 2017 CAPITAL IMPROVEMENT PROJECT  
 03/15/18



VIEW TO BOOKSTORE AREA  
 DESIGN DEVELOPMENT  
 2017 CAPITAL IMPROVEMENT PROJECT  
 03/15/18

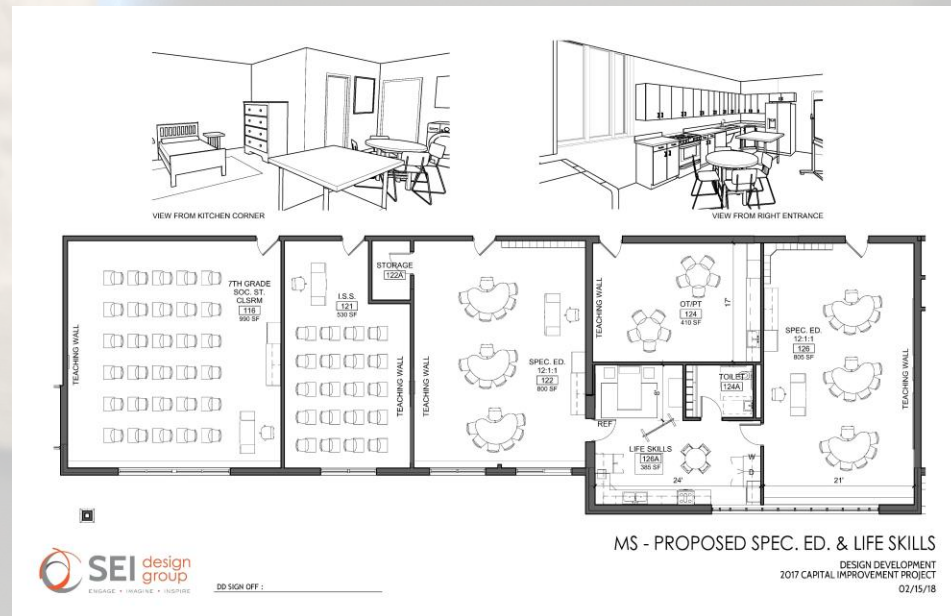
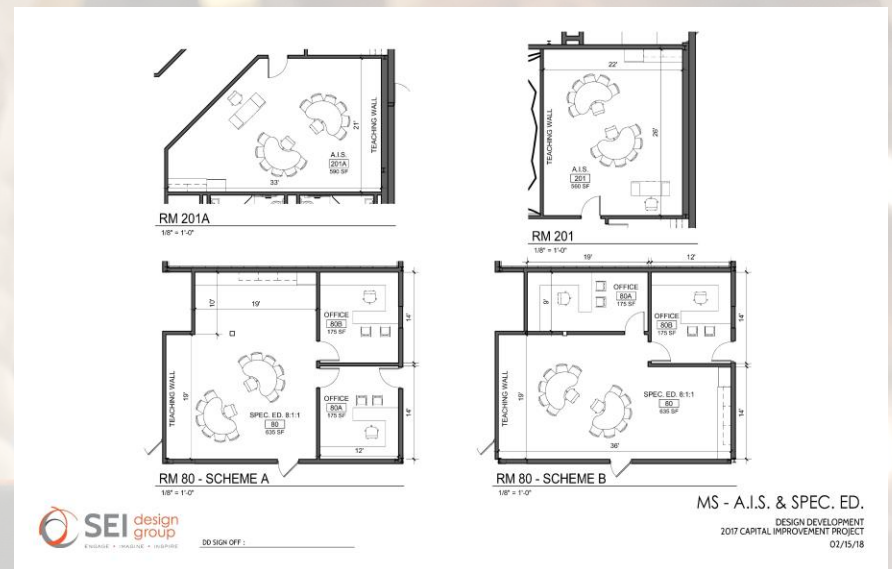
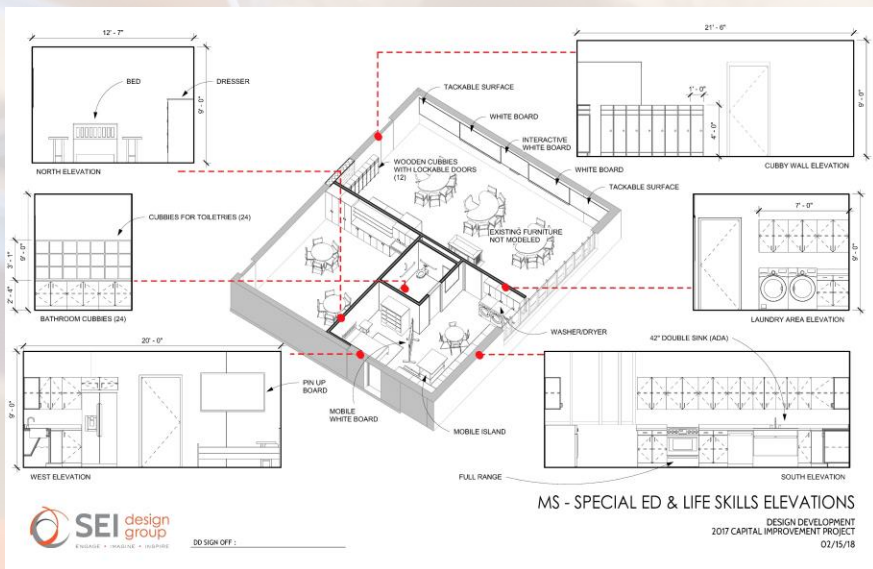


PERSPECTIVE OF FACS WALL  
 DESIGN DEVELOPMENT  
 2017 CAPITAL IMPROVEMENT PROJECT  
 03/15/18



PERSPECTIVE OF LIBRARY ENTRANCE  
 DESIGN DEVELOPMENT  
 2017 CAPITAL IMPROVEMENT PROJECT  
 03/15/18







# Paul Road Elementary





Project: Gates Chili CSD Phase 1.4 – Paul Road CD Plan



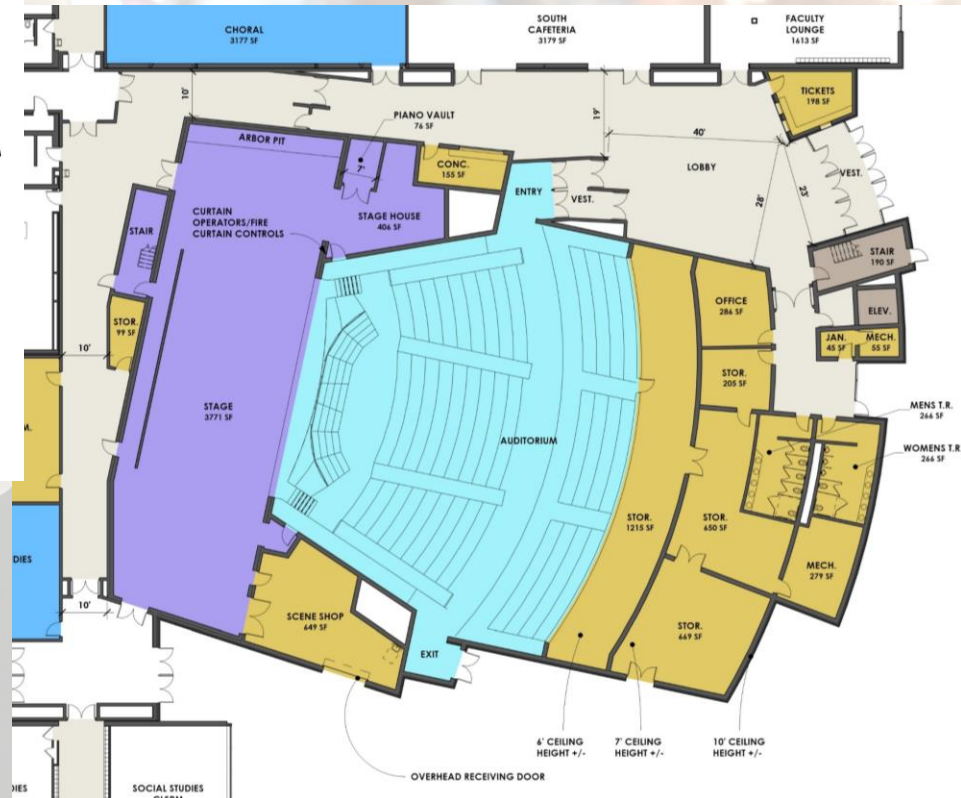
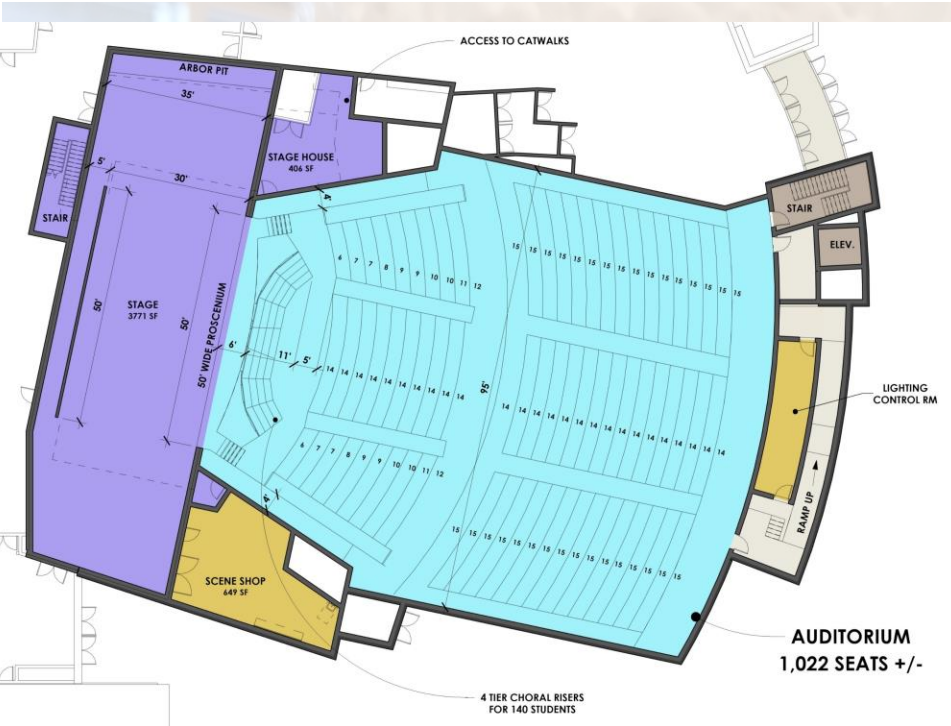


# High School











# Neil Armstrong Elementary





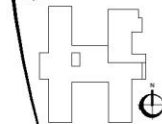
**2017 CAPITAL  
IMPROVEMENT  
PROJECT**

**NEIL ARMSTRONG**

3273 Lyell Rd.  
Rochester, NY 14606

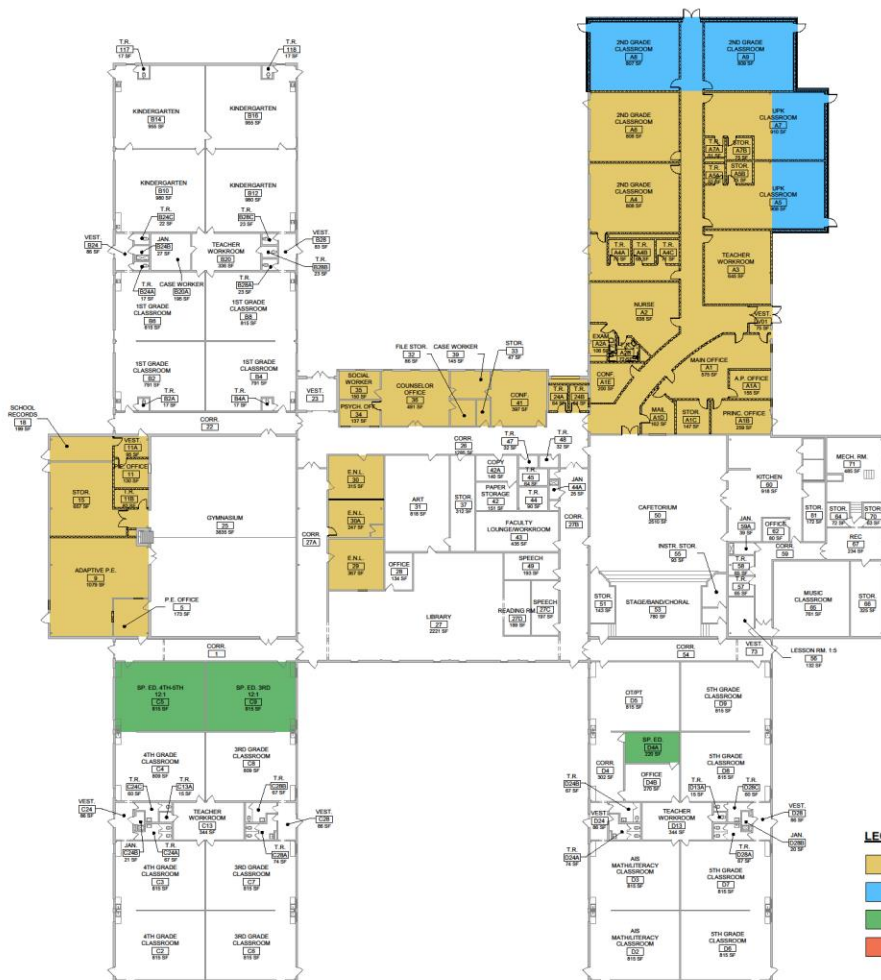
SEI Control No. 26-04-01-04-0-000-010

Key Plan



**SEI**  
design group

165 HAZEL ST. • SUITE 200 • ROCHESTER, NY 14606  
PHONE: 716.243.1234 • FAX: 716.243.1235  
WWW.SEIDSGROUP.COM • INFO@SEIDSGROUP.COM



**LEGEND**

- RENOVATION
- ADDITION
- SPECIAL EDUCATION
- SPECIAL EDUCATION/RENOVATION

**OVERALL PROPOSED BUILDING FOOTPRINT**  
63,314sf (3,120sf ADDITION)

1 NEIL ARMSTRONG PROPOSED FLOOR PLAN  
1/16" = 1'-0"



**NYSED PRELIM REVIEW**

Date: 02-02-2018 SEI Project No. 15-000

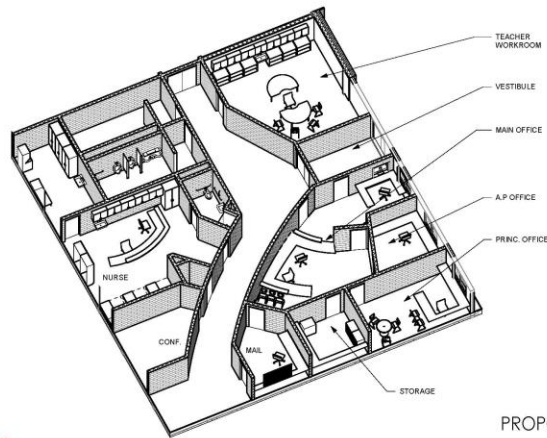
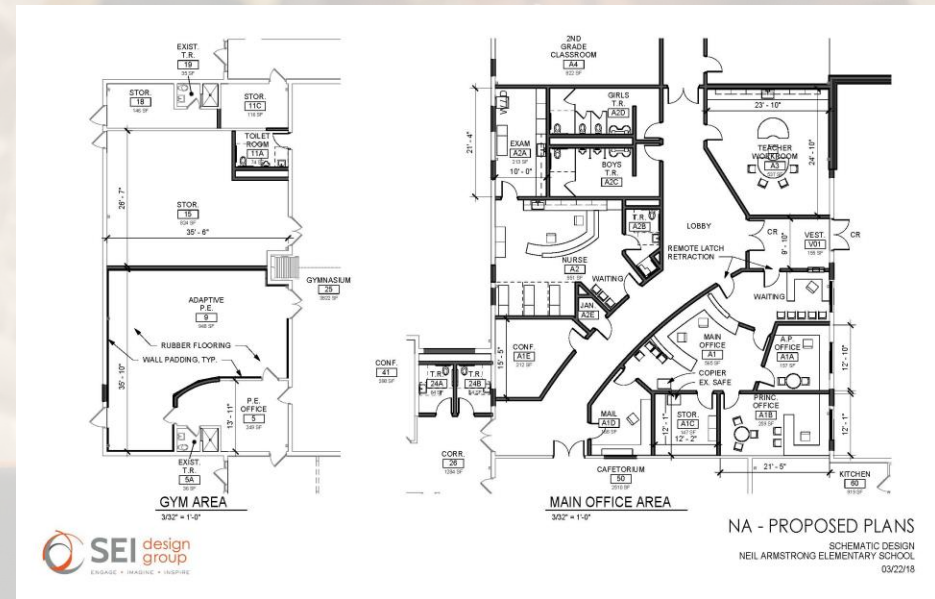
Revisions

**NEIL ARMSTRONG**

PROPOSED FLOOR PLAN

**A901**





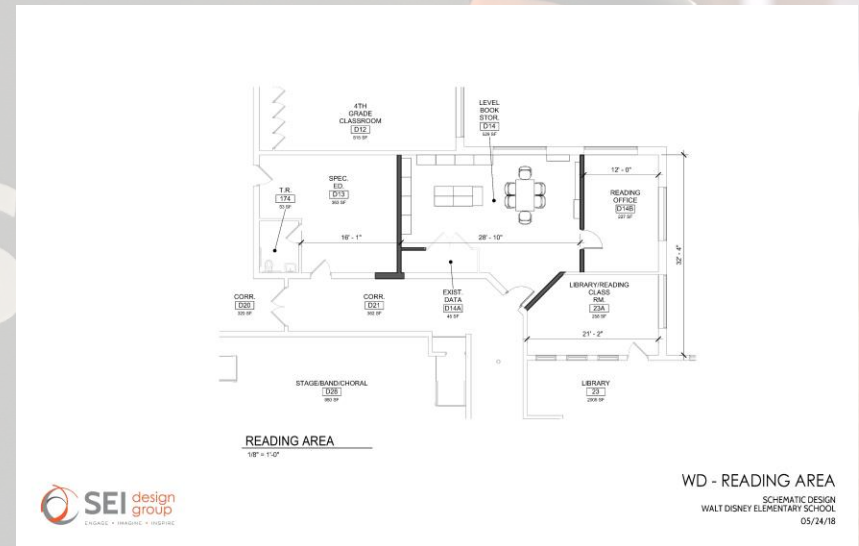
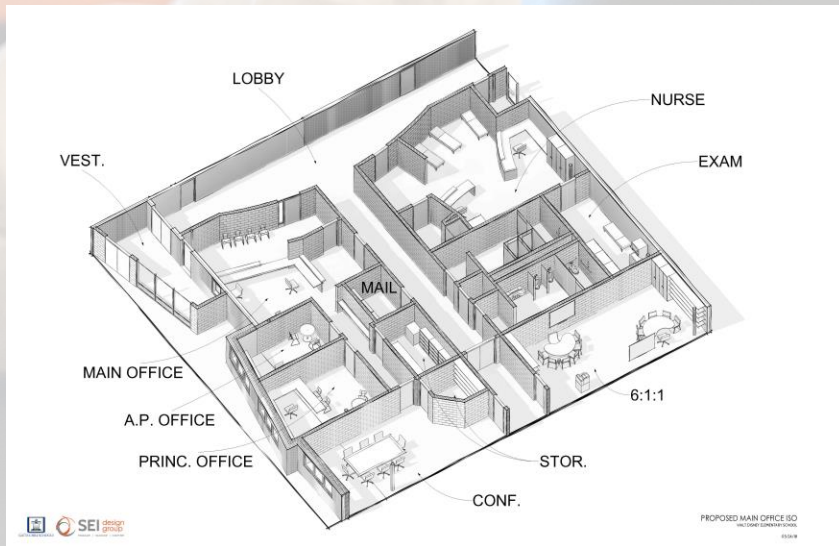
PROPOSED MAIN OFFICE ISO  
SCHEMATIC DESIGN  
NEIL ARMSTRONG ELEMENTARY SCHOOL  
06/11/18

# Walt Disney Elementary











# Questions/Comments

