



Gates Chili CSD

Board of Education

Update 4/24/2018



Gates Chili Central School District

Proposed Capital Project Phasing & Schedule

Phase 1.1 Athletic Field

SED Submission 1/2/2018 (Submitted)

Construction Start 7/16/2018*

Construction Completion 8/30/2019*

Phase 1.2 Florence Brasser 2 UPK Classroom Addition

SED Submission 1/15/2018 (Submitted)

Construction Start 12/3/2018*

Construction Completion 11/18/2019*

Phase 1.3 Middle School

SED Submission 6/25/2018

Construction Start 6/3/2019*

Construction Completion 7/26/2021*

Phase 1.4 Paul Road and Florence Brasser Elementary

SED Submission 6/11/2018

Construction Start 5/6/2019*

Construction Completion 8/24/2020*

Phase 1.5 High School

SED Submission 8/6/2018

Construction Start 7/8/2019*

Construction Completion 3/1/2021*

Phase 1.6 Walt Disney and Neil Armstrong Elementary

SED Submission 2/7/19

Construction Start 1/23/2020*

Construction Completion 9/15/2021*

Phase 1.7 District Wide EPC

SED Submission 5/2/18

Construction Start 3/26/2019*

Construction Completion 10/7/2019*

* Dates indicated are estimated pending NYSED approval process and bidding

Middle School





3/64" = 1'-0"

MS - OVERALL PROPOSED PLAN
2017 CAPITAL IMPROVEMENT PROJECT

02/19/18



VIEW TO BOOKSTORE AREA

DESIGN DEVELOPMENT
2017 CAPITAL IMPROVEMENT PROJECT
03/15/18



PERSPECTIVE OF LIBRARY ENTRANCE

DESIGN DEVELOPMENT
2017 CAPITAL IMPROVEMENT PROJECT
03/15/18



MS - CENTER CORE AREA
2017 CAPITAL IMPROVEMENT PROJECT

02/15/18



ELEVATION A

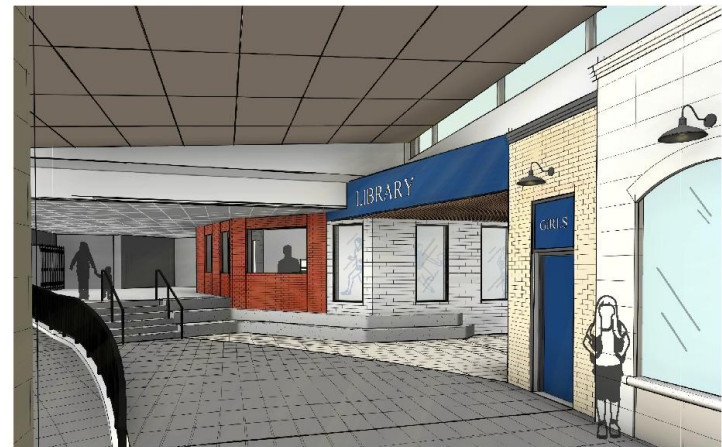


ELEVATION B



PERSPECTIVE FROM STAIR

DESIGN DEVELOPMENT
2017 CAPITAL IMPROVEMENT PROJECT
03/15/18



PERSPECTIVE OF LIBRARY ENTRANCE

DESIGN DEVELOPMENT
2017 CAPITAL IMPROVEMENT PROJECT
03/15/18



Paul Road Elementary



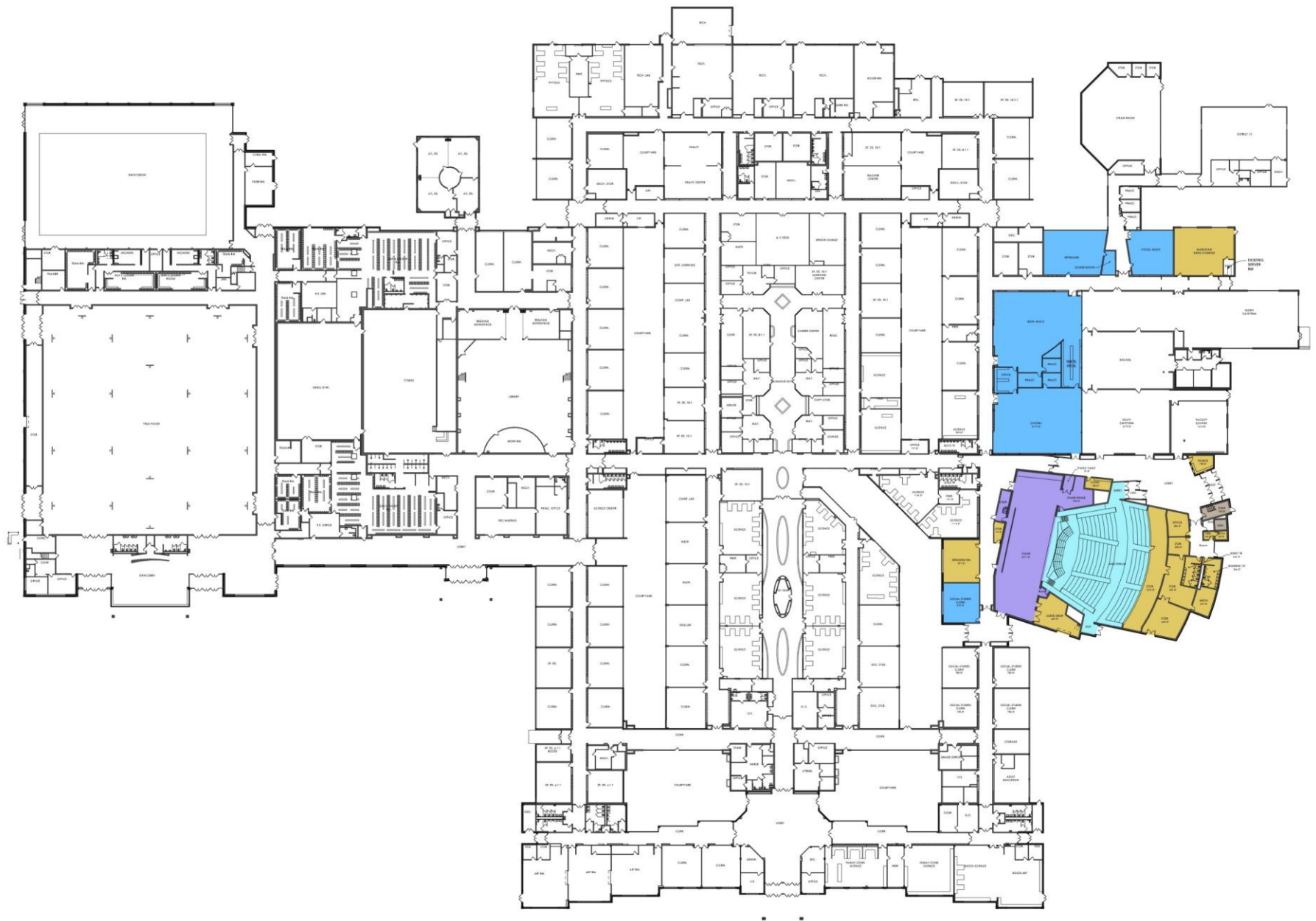


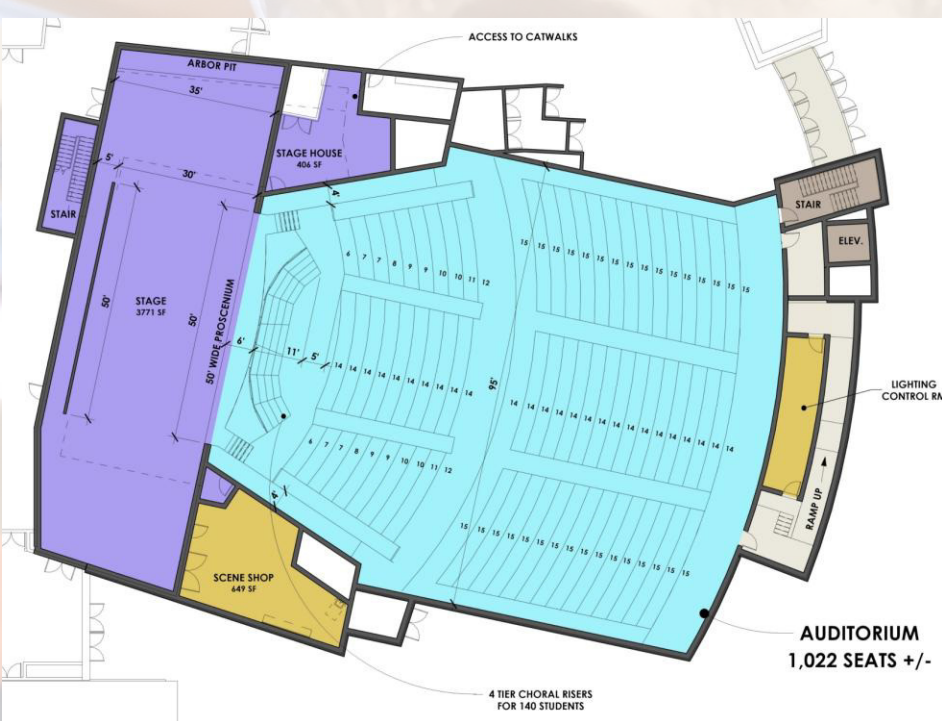
Project: Gates Chili CSD Phase 1.4 – Paul Road CD Plan



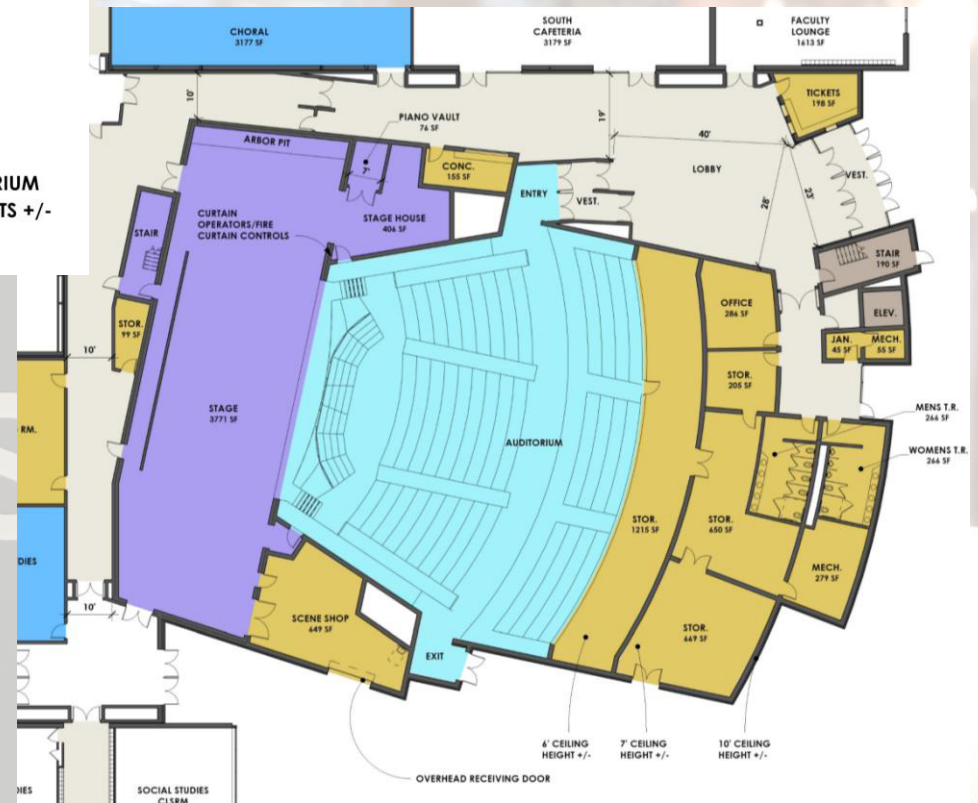
High School



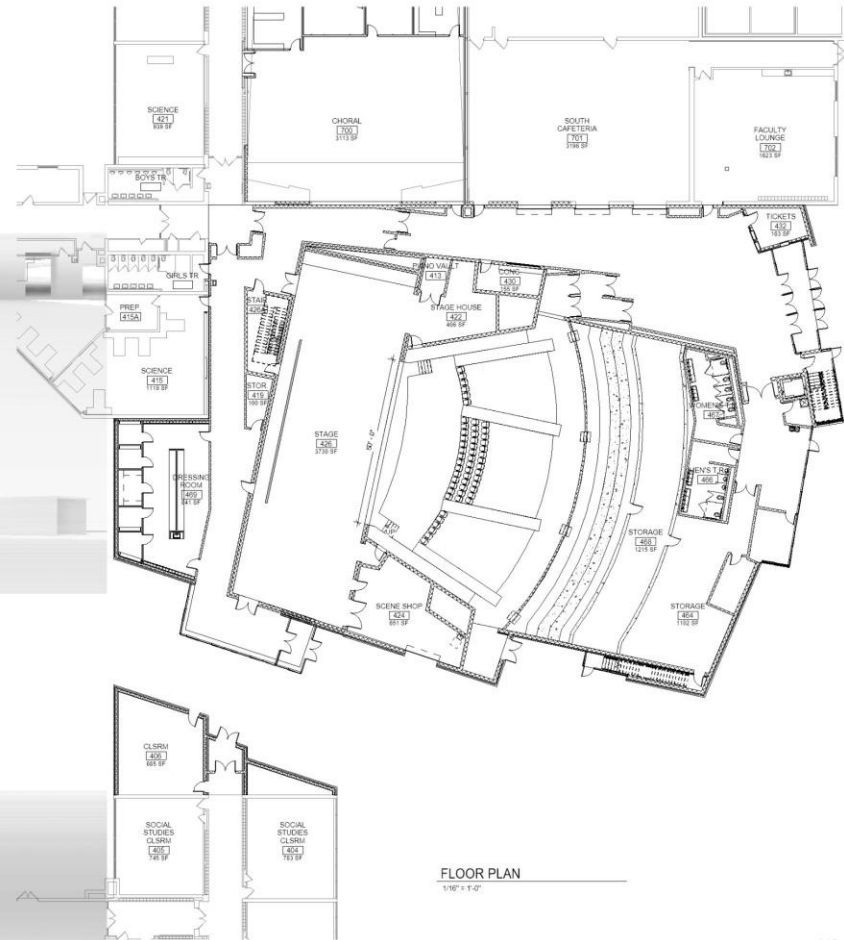
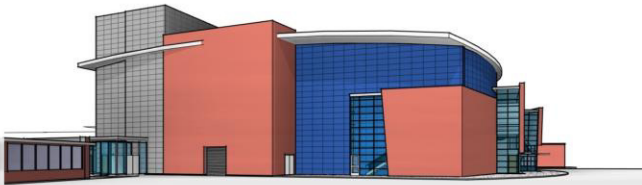
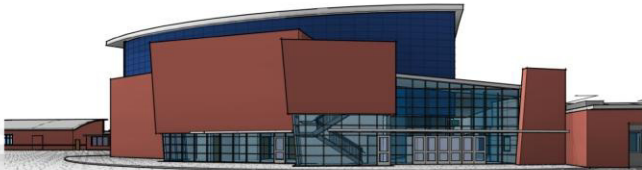




Second Floor Plan

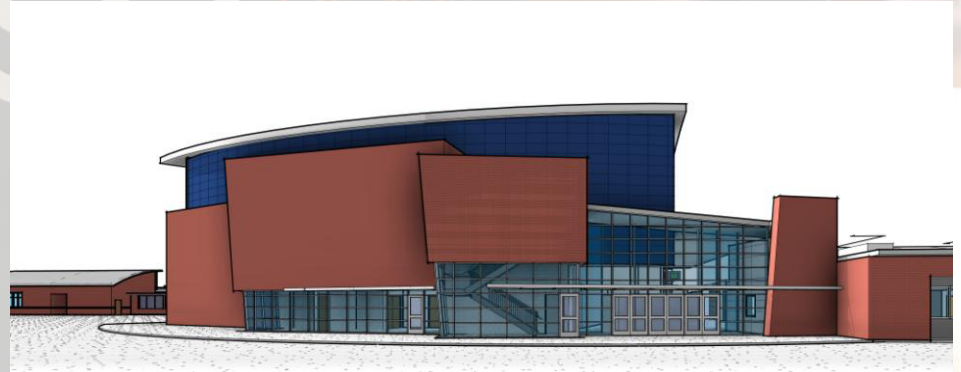
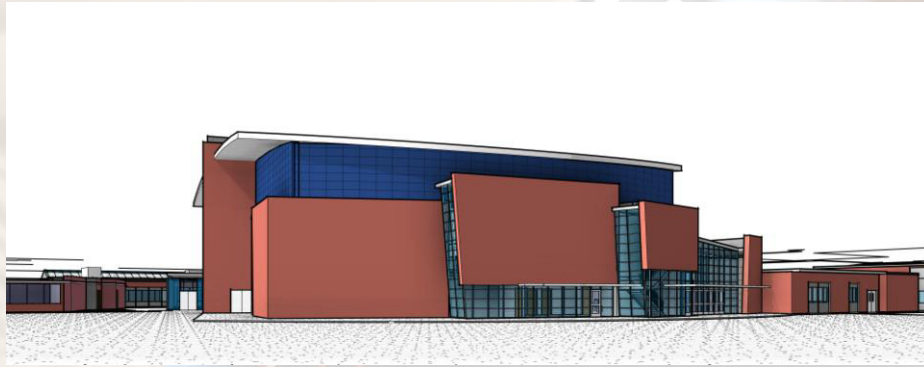


First Floor Plan



HS PROPOSED AUDITORIUM
2017 CAPITAL IMPROVEMENT PROJECT

04/23/18



Neil Armstrong Elementary



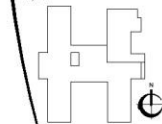


**2017 CAPITAL
IMPROVEMENT
PROJECT**

NEIL ARMSTRONG
3273 Livell Rd.
Rochester, NY 14606

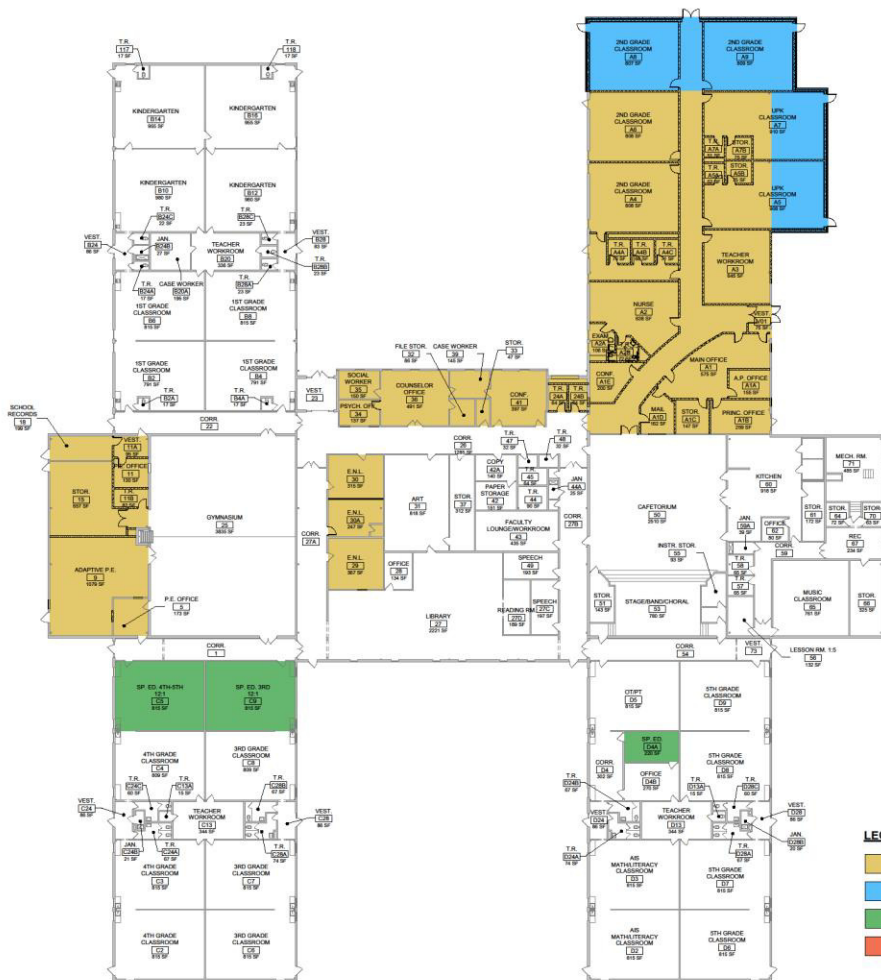
SEI Control No. 20-04-01-04-0-000-010

Key Plan



SEI
design group

100 N. Main St., 2nd Floor, Rochester, NY 14602
Phone: 716.243.1100 • Fax: 716.243.1101
www.seidsgroup.com



LEGEND

- RENOVATION
- ADDITION
- SPECIAL EDUCATION
- SPECIAL EDUCATION/RENOVATION

OVERALL PROPOSED BUILDING FOOTPRINT
63,314sf (3,120sf ADDITION)

1 NEIL ARMSTRONG PROPOSED FLOOR PLAN
SWP - 1 of 2



NYSED PRELIM REVIEW

Date: 02-02-2018 SEI Project No. 15-005

Revisions

NEIL ARMSTRONG
PROPOSED FLOOR PLAN

A901

Walt Disney Elementary





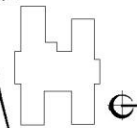
**2017 CAPITAL
IMPROVEMENT
PROJECT**

WALT DISNEY

175 Coldwater Rd.
Rochester, NY 14624

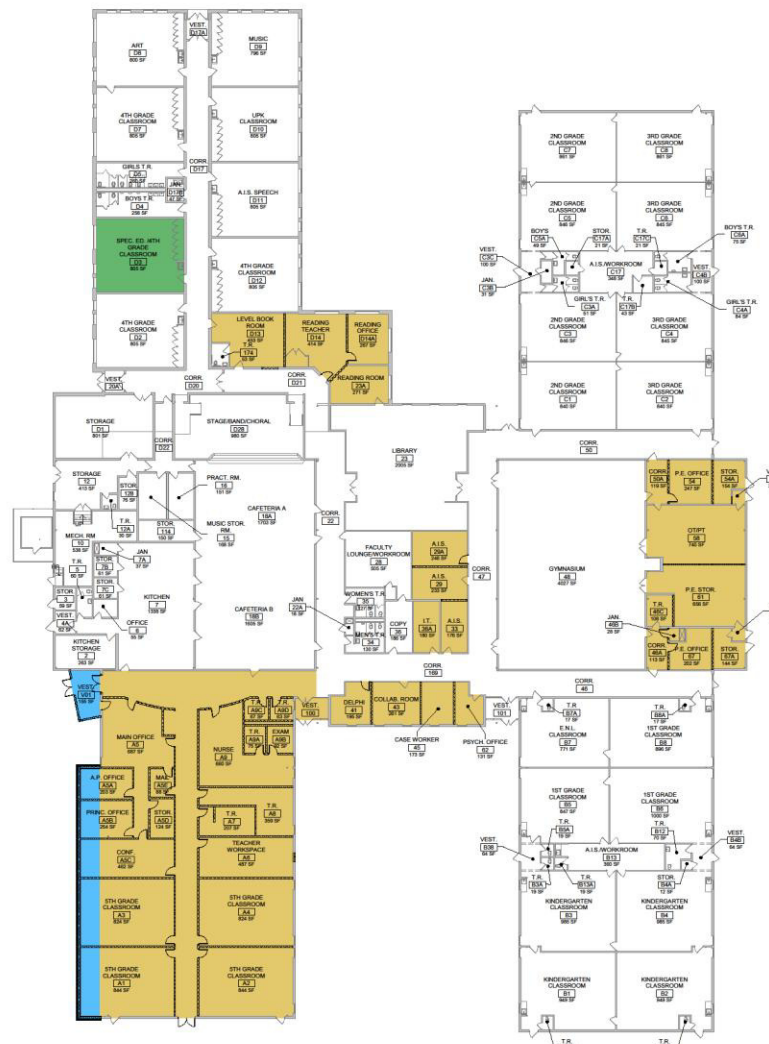
SED Control No. 26-04-01-04-0008-010

Key Plan



SEI
design group

100 ALBANY STREET, SUITE 200, ALBANY, NY 12206
518.487.7447 • 518.487.7448 • FAX 518.487.7449 • WWW.SEI-DESIGN.COM



LEGEND

- RENOVATION
- ADDITION
- SPECIAL EDUCATION
- SPECIAL EDUCATION/RENOVATION

OVERALL PROPOSED BUILDING FOOTPRINT
64,434sf (990sf ADDITION)

1 WALT DISNEY PROPOSED FLOOR PLAN
1/8" = 1'-0"



NYSED PRELIM REVIEW

Date: 02-02-2019 SEI Project No. 15-4000

Revisions

WALT DISNEY
PROPOSED FLOOR PLAN

A801

Questions/Comments

